

AEOLUS

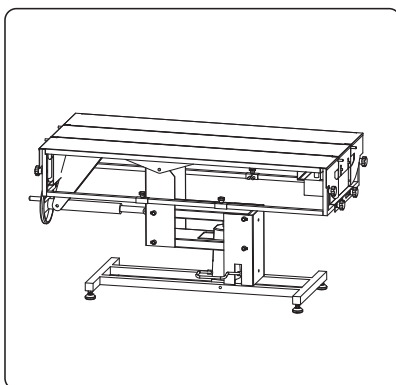
Professional Vet Equipments Supplier



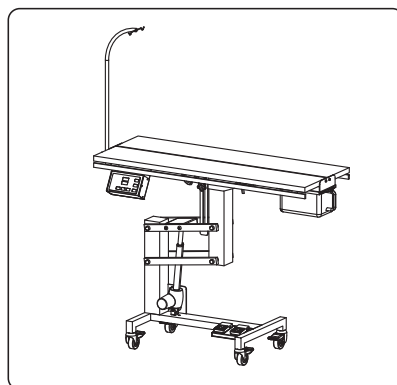
AEOLUS

Universal Operation Table

FT-882



FT-826



FT-828H

Distributor Contacts

DALLAS

3249 Story Rd. W Irving, TX 75038, USA.

Tel: +1 469 930 6359

Web: www.aeoluspet.com

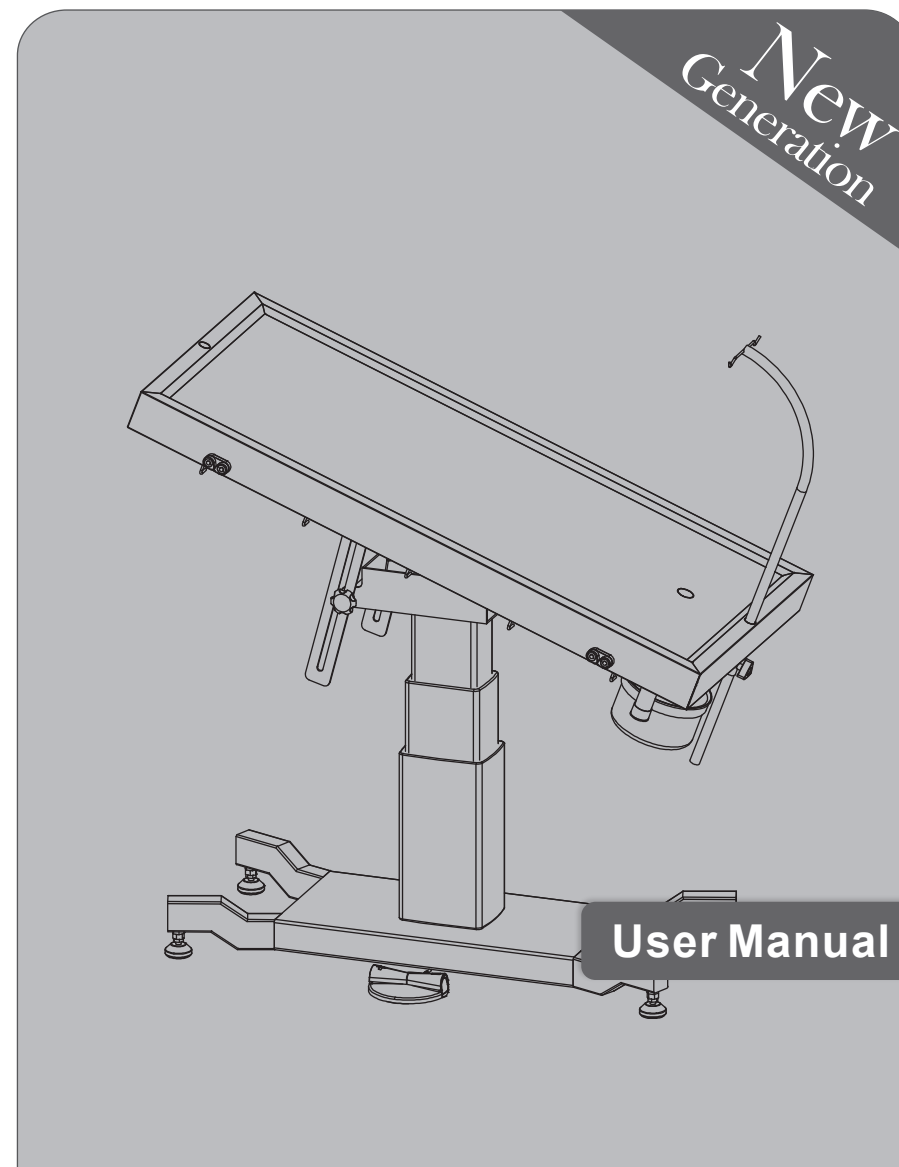
Shanghai

Room 403, Building 3, No. 288, Qianfan Road,
Songjiang District, Shanghai, China.

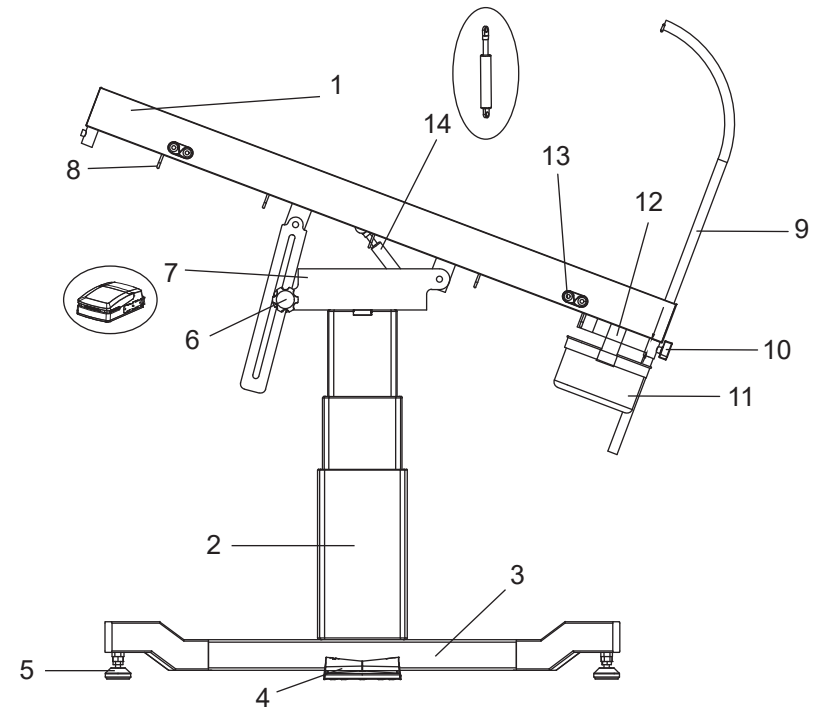
Tel: +86-21-67632060, 67632364



AEOLUS



Overview



- | | |
|---------------------------------------|-----------------------------|
| 1. Stainless Steel Recessed Table Top | 8. Pet Restraint Hook |
| 2. Linak Electrical Lifting Column | 9. IV Pole |
| 3. Table Base | 10. Fixing Screw of IV Pole |
| 4. Foot Pedal | 11. Waste Liquid Box |
| 5. Adjusting Leveller | 12. Waste Liquid Hole |
| 6. Tilting Adjustable Knob | 13. Pet Restraint Cleat |
| 7. Linak Transformer | 14. Air Rod |

Thank you for purchasing our products!
Please read this manual carefully before operation.
IMPORTANT: DO NOT ATTEMPT TO DISASSEMBLE TABLE WITHOUT CONTACTING AEOLUS.
For your safety, please follow the instructions:
This product is for veterinary use only. We do not condone this product for other uses.
To reduce the risk of injury, the user must read and understand this guide before installation of this product.

Specification

Rated Voltage: AC 220V 50Hz, AC 110V 60Hz

Overall Dimensions: 120cmL×65cmW×58.5cm-99cmH 47"L×26"W×23"-39"H

Carton Dimension: 125×70×74cm

Loading Capacity: 100kg (220lb)

Net Weight: 59kg

Gross Weight: 80kg

Introduction

AEOLUS Universal Operation Table FT-882, rock-solid at any adjustable height (585mm-990mm), features durable LINAK actuator and transformer, neatly welded and nice polished table top, constructed from SUS304 stainless steel. Daily examination and simple operation could be executed on this table perfectly.

Package Inspection

The manufacturer is not liable for any damage caused by a third party "Transport or Delivery Company".

The day the unit is delivered, an inspection of the outer packing should be made for any damage to the packing box.

Then the unit should be unpacked carefully; all components, accessories and the table itself should be inspected for any damage or loss.

If any damage is evident, the carrier or dealer should be notified immediately.

Safety Warning

1. Use only as described in this manual. Use only manufacturer's recommended attachments.
2. To reduce the risk of fire, or electric shock. DO NOT use outdoors or on wet surfaces. DO NOT place the product on an uneven or soft ground.
3. This product is not intended for use by persons (including children) with reduced physical, sensory or mental capabilities, or lack of experience and knowledge, unless they have been given supervision or instruction concerning use of the product by a person responsible for their safety. Children should be supervised to ensure that they do not play with the product.
4. DO NOT use with damaged cord or plug.
5. DO NOT cut, damage, or modify the cord. DO NOT pull or carry by cord, use cord as a handle, close door on cord, or pull cord around sharp edges or corners. DO NOT pull, twist, or bend the cord with unnecessary force. DO NOT run the product over cord. Keep cord away from heated surfaces. DO NOT place heavy objects on the cord or allow the cord to get pinched in between objects. DO NOT wind the cord around the product.
6. DO NOT unplug by pulling on cord. To unplug, grasp the plug, not the cord.
7. DO NOT handle plug or the product with wet hands.
8. Turn off all controls before unplugging.
9. DO NOT use the product near flammable or combustible liquids such as gasoline or use in areas where they may be present. The fumes from these substances can create a fire hazard or explosion.
10. DO NOT modify, disassemble or repair.
11. Make sure the local voltage and frequency of the power meet the requirements on the label of the product.
12. Avoid using the product in dusty, vibrating and wet environment and in chemical storage place.
13. Neither people nor animals are allowed to be under the tub especially when it is power-on.

Assembly Instructions

1. Unpack the package and place the table in the right place.
2. Adjust the Adjustable Leveler until the table stands on the ground steadily.
3. Insert the IV Pole into the fixture tube and tighten it with the fixing screw tightly when necessary.
4. Place the Waste Liquid Box under the table right beneath the Waste Liquid Hole.
5. Plug the table to suitable power socket, and adjust the height by stepping up/down the foot pedal.

Operation Instructions

- 1.Plug in.
 - 2.Step on the UP/DOWN foot pedals to adjust the table to proper height.
 - 3.Insert the IV Pole into the fixture tube and tighten it with the fixing screw tightly.
 - 4.Place the Waste Liquid Box under the table right beneath the Waste Liquid Hole.
 - 5.Clean and disinfect the table top.
 - 6.Put the animal on the table top and start examine/operation.
 - 7.Unscrew the tilting adjustment knob slightly to loose it, and the tabletop will tilt itself. Tighten the knob to fix the tabletop at proper tilting height. When flattening the tabletop, unscrew the knob and press down the tabletop, then tighten the knob to fix the tabletop.
- After the examine/operation, remove the animal, and unplug the table. Clean and disinfect the table top.

Maintenance

In between usages, the table should be cleaned and disinfected thoroughly.
The moving parts of the table should be lubricated frequently to ensure smooth moving action.

Service Support

Contact us if you cannot solve your problem with this manual.

Dallas

3249 Story Rd. W, Irving, TX 75038, USA.

Tel: +1 469 930 6359

Web: www.aeoluspet.com

Shanghai

Room 403, Building 3, No. 288, Qianfan Road, Songjiang District, Shanghai, China.

Tel: +86-21-67632060, 67632364