

# AEOLUS

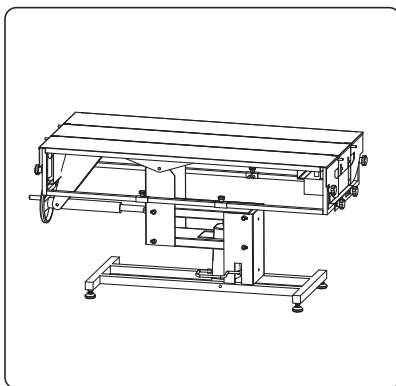
## Professional Vet Equipments Supplier



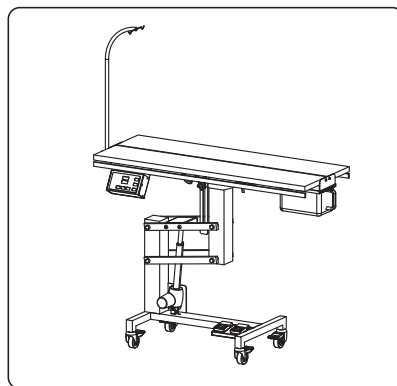
AEOLUS

## Economic Lifting Operation Table

FT-872E



FT-826



FT-828H

### Distributor Contacts

#### **DALLAS**

3249 Story Rd. W Irving, TX 75038, USA.

Tel: +1 469 930 6359

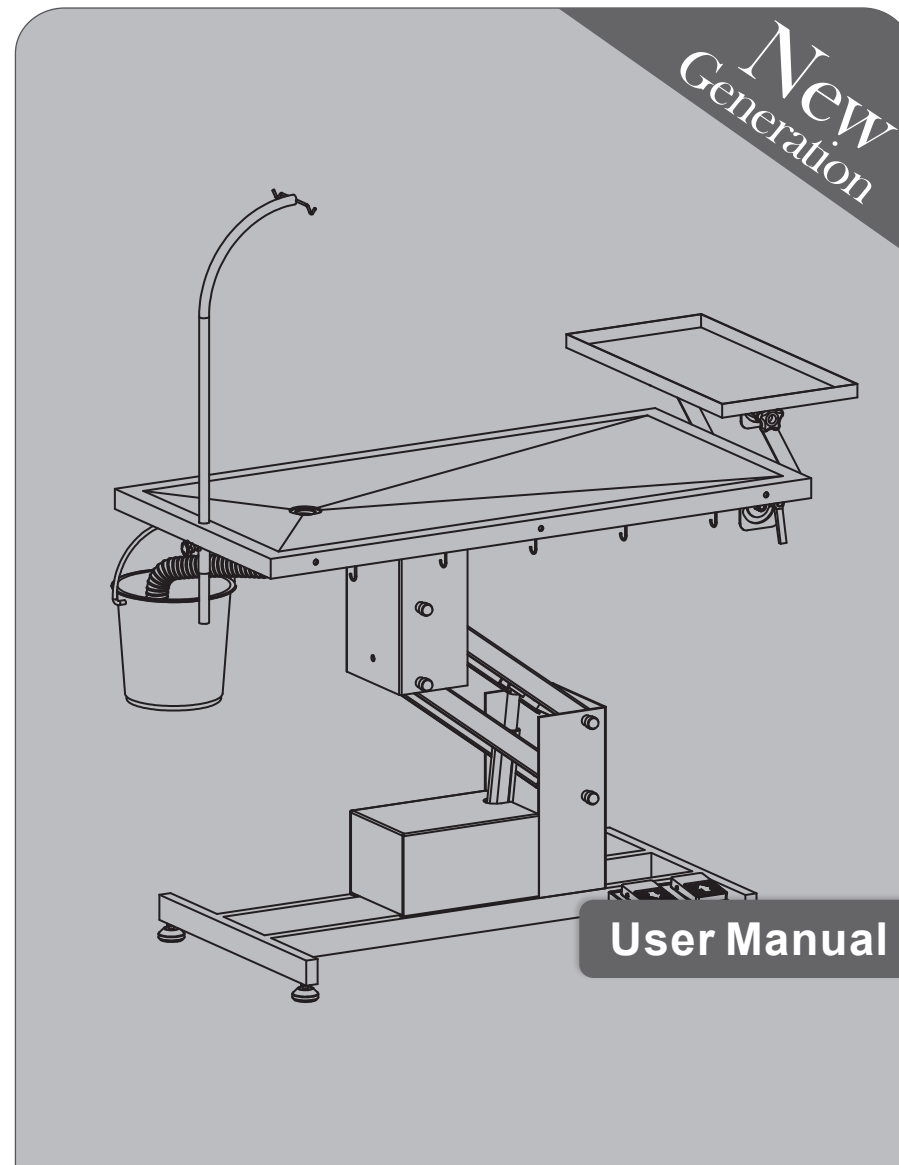
Web: [www.aeoluspet.com](http://www.aeoluspet.com)



#### **Shanghai**

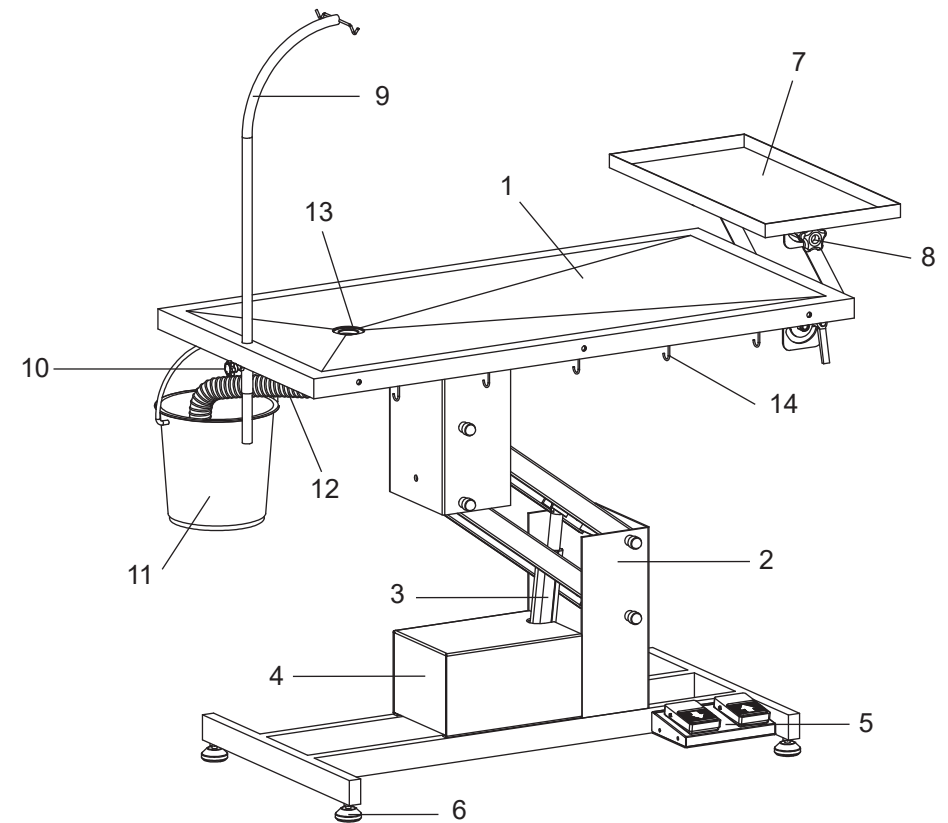
Room 403, Building 3, No. 288, Qianfan Road,  
Songjiang District, Shanghai, China.

Tel: +86-21-67632060, 67632364



User Manual

## Overview



- |                                    |  |
|------------------------------------|--|
| 1. Stainless Steel Table Top       | 8. Fixing Screw Knob for Tools Tray (optional) |
| 2. Table Base                      | 9. IV Pole                                     |
| 3. Electric Actuator               | 10. Fixing Screw Knob for IV Pole              |
| 4. Transformer                     | 11. Waste Liquid Bucket                        |
| 5. Foot Pedal                      | 12. Soft Hose                                  |
| 6. Adjustable Leveller             | 13. Waste Liquid Hole                          |
| 7. Extension Tools Tray (optional) | 14. Pet Restraint Hook                         |

# Specification

**Rated Voltage:** AC 220V 50Hz, AC 110V 60Hz

**Product Dimension:** 48"L×26"W×25-41"H

120cmL×66cmW×63.5cm-104.5cmH

**Package Dimension:** 129.5cmL×68cmW×66cmH

**Loading Capacity:** 100kg (220lbs)

**Net Weight:** 40kg

**Gross Weight:** 59kg

# Brief Introduction

AEOLUS Economic Lifting Operation Table FT-872E, rock-solid at any adjustable height (635mm-1450mm), features a classical Z-shaped design that eliminates wobbling and tipping, a powerful and durable electric lifting actuator that holds up to 100kg, a stainless steel tabletop with diagonal embossing structure that diverts liquid waste efficiently, a smart designed metal base with scratch-resistant white power coating that offers secure stability of operation and durable product wear, an IV Pole to hand the transfusion bag, a drainage system on the tabletop to collect waste liquid into a bucket, an optional extension tray which could be used either for extending the tabletop length or providing tools organizing space.

# Package Inspection

The manufacturer is not liable for any damage caused by a third party "Transport or Delivery Company".

The day the unit is delivered, an inspection of the outer packing should be made for any damage to the packing box.

Then the unit should be unpacked carefully; all components, accessories and the table itself should be inspected for any damage or loss of component parts.

If any damage is evident, the carrier or dealer should be notified immediately.

# Safety Warning

1. Use only as described in this manual. Use only manufacturer's recommended attachments.
2. To reduce the risk of fire, or electric shock. DO NOT use outdoors or on wet surfaces. DO NOT place the product on an uneven or soft ground.
3. This product is not intended for use by persons (including children) with reduced physical, sensory or mental capabilities, or lack of experience and knowledge, unless they have been given supervision or instruction concerning use of the product by a person responsible for their safety.
4. Children should be supervised to ensure that they do not play with the product.
5. DO NOT use with damaged cord or plug.
6. DO NOT cut, damage, or modify the cord. DO NOT pull or carry by cord, use cord as a handle, close door on cord, or pull cord around sharp edges or corners. DO NOT pull, twist, or bend the cord with unnecessary force. DO NOT run the product over cord. Keep cord away from heated surfaces. DO NOT place heavy objects on the cord or allow the cord to get pinched in between objects. DO NOT wind the cord around the product.
7. DO NOT unplug by pulling on cord. To unplug, grasp the plug, not the cord.
8. DO NOT handle plug or the product with wet hands.
9. Turn off all controls before unplugging.
10. DO NOT modify, disassemble or repair. Only permit repairs to the table to be made by authorized dealers or the factory customer service department; this applies especially to replacement of a damaged power cord.
11. Make sure the local voltage and frequency of the power meet the requirements on the label of the product.
12. Avoid using the product in dusty, vibrating and wet environment and in chemical storage place.
13. Neither people nor animals should be under the tabletop when it is power-on.
14. Gently control the table to raise or lower slowly and safely.

# Assembly Instructions

- 1.Unpack the package and place the table to right place.
- 2.Adjust the adjustable leveller to ensure the table stands on the ground steadily.
- 3.Connect and fix the soft hose to the drainage lower tube by using the stainless steel clip provided.
- 4.Hang the waste liquid bucket on the hook under the tabletop and put the end o the soft hose in the bucket.
- 5.Insert the IV pole into the fixture tube and fasten the screw knob to fix it tightly when necessary.
- 6.Fix the extension tools tray at the end of the tabletop (optional).
- 7.Plug the table to suitable power socket, and adjust the height by stepping the UP/DOWN foot pedal.

# Operation Instructions

- 1.Plug in.
- 2.Step on the UP/DOWN foot pedals to adjust the table to proper height.
- 3.Insert the IV pole into the fixture tube and fasten the screw knob to fix it tightly when necessary.
- 4.Fix the extension tools tray at the end of the tabletop (optional).
- 5.Clean and disinfect the tabletop.
- 6.Put the animal on the tabletop and start operation.
- 7.After operation, remove the animal, and unplug the table.
- 8.Clean and disinfect the tabletop.

# Maintenance

In between use, the table should be cleaned and disinfected thoroughly.  
The moving part of the table should be often lubricated to ensure the smooth movement.

# Service Support

Contact us if you cannot solve your problem with this manual.

Dallas  
3249 Story Rd. W Irving, TX 75038, USA.  
Tel: +1 469 930 6359  
Web: [www.aeoluspet.com](http://www.aeoluspet.com)

Shanghai  
Room 403, Building 3, No. 288, Qianfan Road, Songjiang District, Shanghai, China.  
Tel: +86-21-67632060, 67632364