

Edan U60 Vet

Portable Ultrasound System



Clear. Compact. Comprehensive.





Designed for veterinary, using a technology that has been used and proven in many applications.

The U60 is a cost-effective, portable Color Doppler diagnostic ultrasound system. Characterised by user-friendly workflow, the U60 offers excellent image quality and reliable performance delivering high diagnostic confidence.

An optional lithium battery provides 90 minutes of operation between charging. Available with transducer and veterinary measurement packages to support a wide range of applications including abdominal, OB/GYN, vascular, cardiac, and small parts.

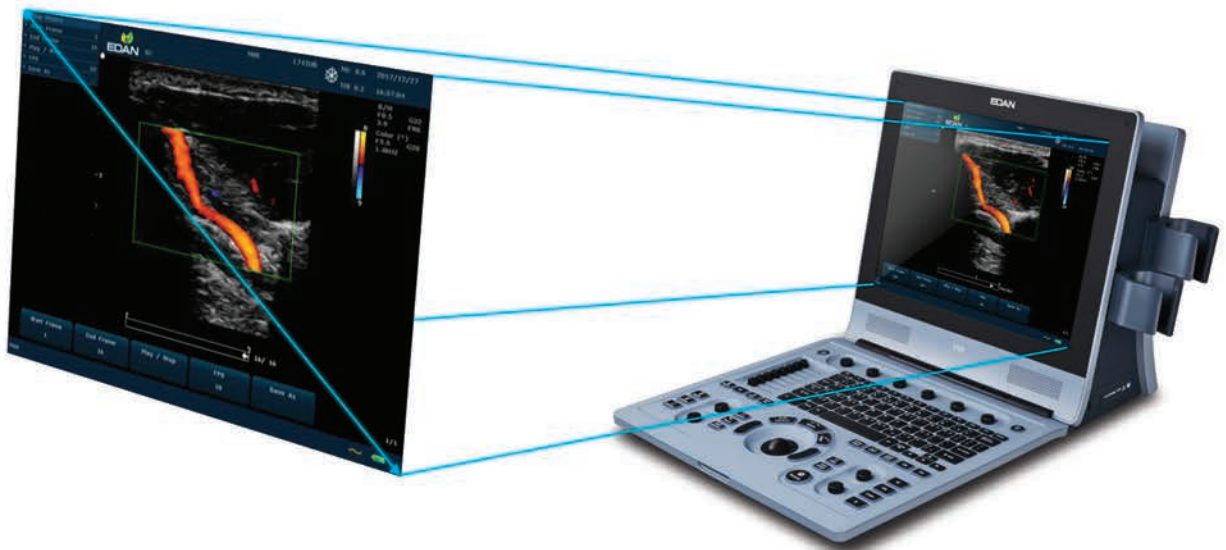
- Ergonomic Design
- Uncompromised Imaging Performance
- Expanding Applications
- Accessories Information

Ergonomic Design.

With its compact design, user-friendly operation and advanced imaging technologies, the U60 diagnostic ultrasound system offers a broad range of clinical applications to address imaging needs for veterinary clinics.

- Large LCD Monitor for enhanced display

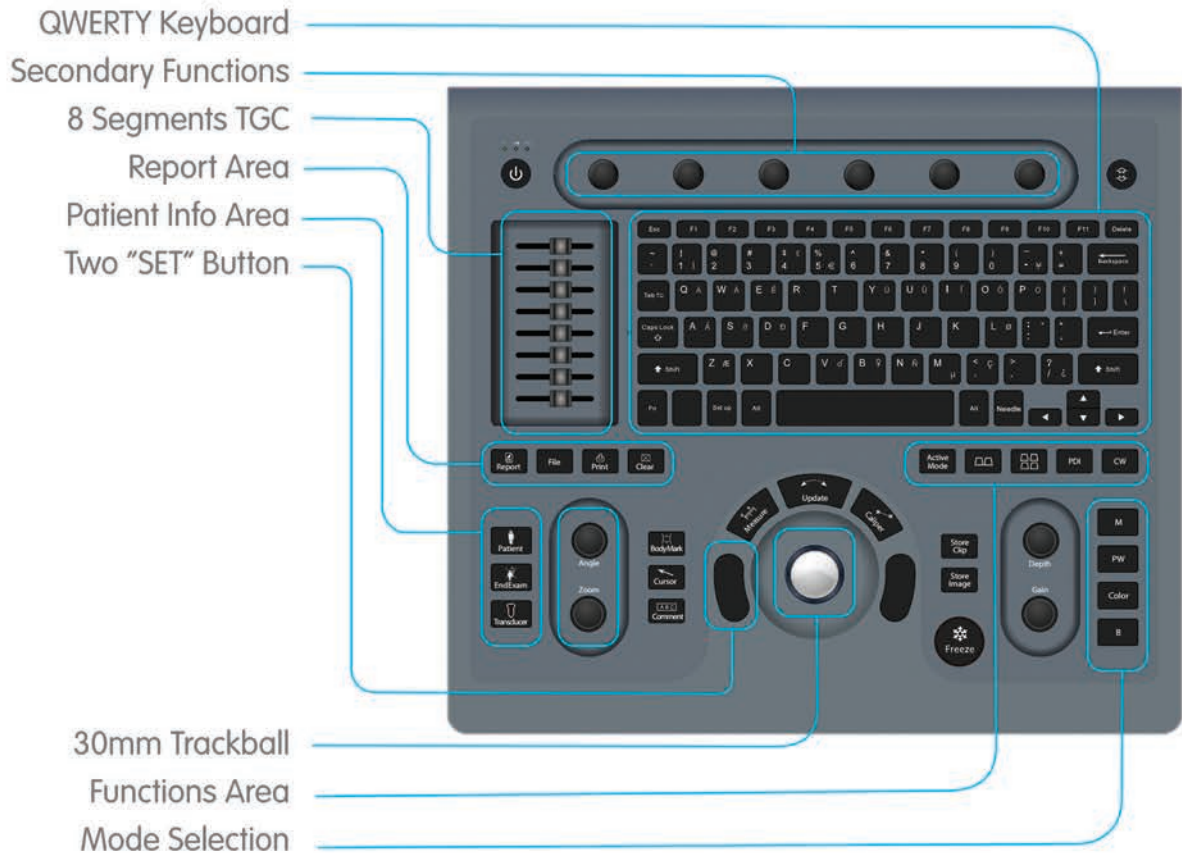
15.6 LCD



- Excellent Mobility



Lightweight -Approx. 8.5kg
Ideal for visits
Portable and Convenient



Integrated Gel Holder



Two Transducer Connectors



Integrated Battery with 80 Minutes Life

Streamlined and User-friendly Design

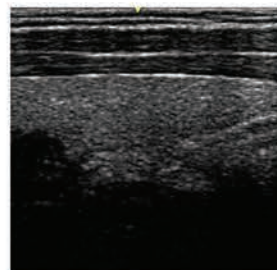
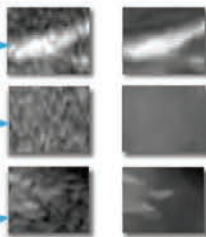
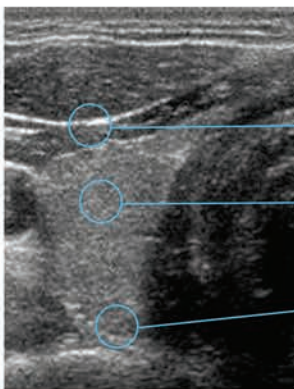




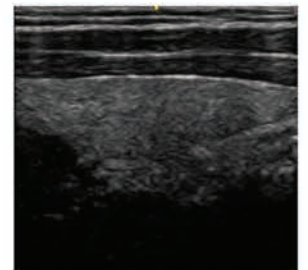
Uncompromised Imaging Performance.

The U60 provides excellent detail, contrast resolution and image uniformity without sacrificing penetration. Excellent Colour Doppler sensitivity easily detects small, low flow vessels.

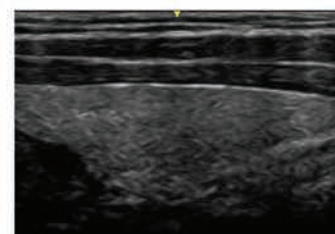
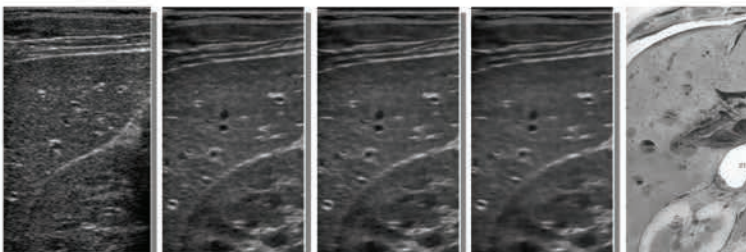
- eSRI - Speckle Reduction and Edge Enhancement



eSRI: 0

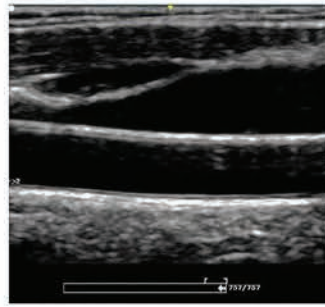
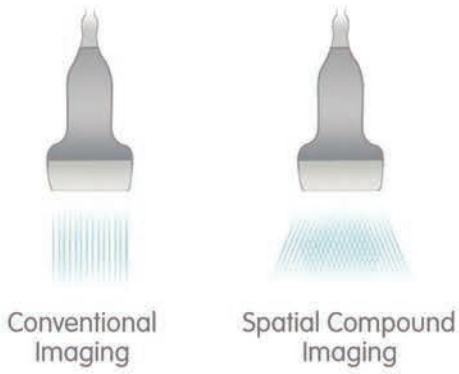


eSRI: 5

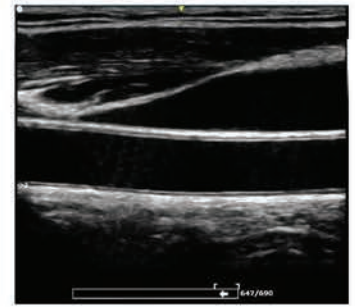


eSRI: 8

- SCI: Spatial Compound Imaging

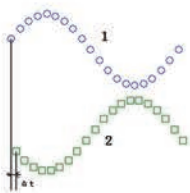


SCI OFF

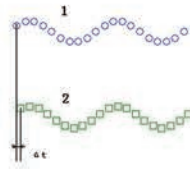


SCI ON

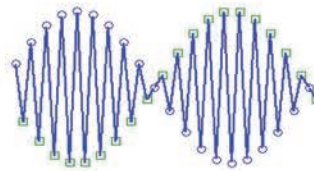
- PIH: Pulse Inversion Harmonics



Fundamental



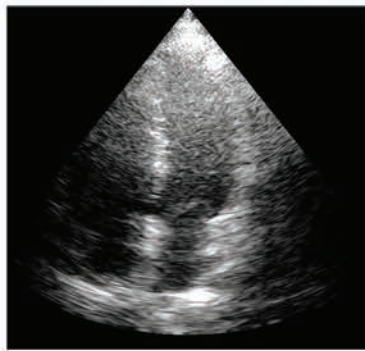
Harmonic



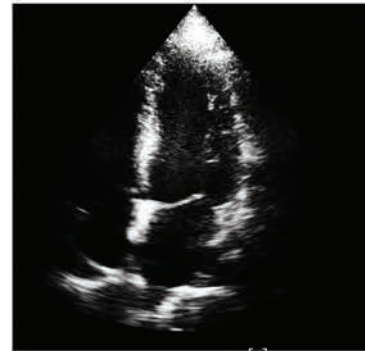
Fundamental echo is modulated



Harmonic echo is upsampled

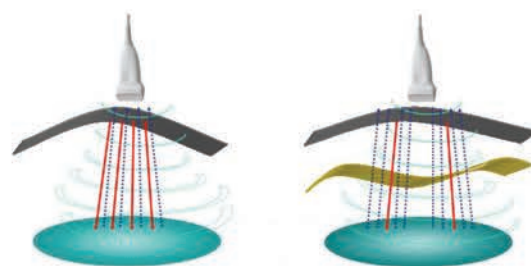


Harmonics OFF



Harmonics ON

- Multi-Beam Imaging



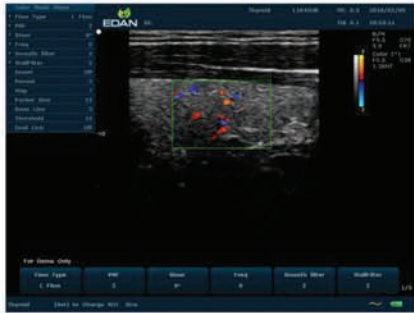
Internal Organ or Tissue

- Quick Imaging Tools

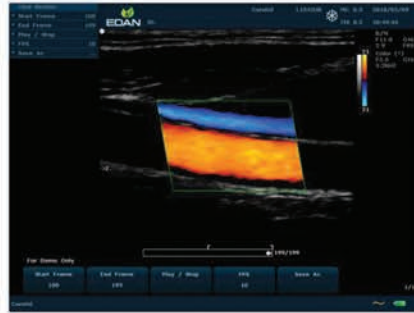
Quick Imaging Tools: Quickly optimise multiple parameters resulting in rapid optimisation in imaging for all modes.

- In B-mode, the Quick Imaging Tools feature adjusts multiple parameters to provide the best image quality.

- In Doppler, the Quick Imaging Tools feature adjusts for flow state reducing keystrokes.



Low Flow



Medium Flow



High Flow



Detail

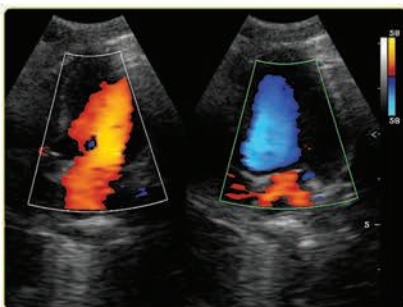


Soft



High Contrast

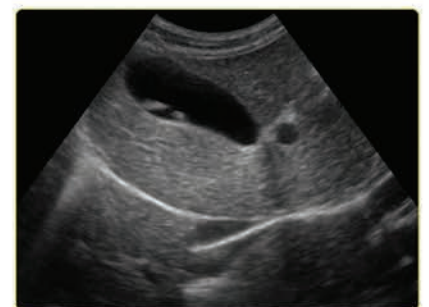
- Clinical Images - Canine Imaging



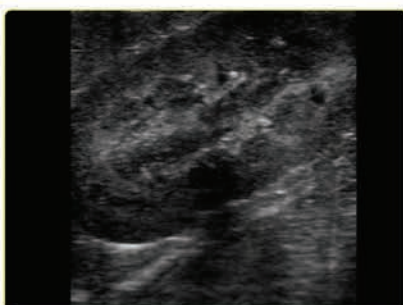
Canine Cardiac Blood Flow



Canine Foldable Gallbladder



Canine Gallbladder Polyps



Canine Kidney



Canine Liver Artery PW Doppler



Canine Stomach



Expanding Applications.

- Complete Set of Transducers



C5-2B
2-6 MHz Curved Array



C352UB
2-6 MHz Curved Array



C612UB
5-10 MHz Micro-Convex



P5-1B
2-4 MHz Phased Array



L15-7B
7-16 MHz Linear Array



L1042UB
8-12 MHz Linear Array



L742UB
5-10 MHz Linear Array



L552UB
4-8 MHz Linear Array



CA22UB
4-9 MHz Micro-Convex



C6152UB
4-9MHz Micro-Convex



V562UB
2-9MHz Endorectal



V562UB
3-12MHz Endorectal

Accessories Information.



- Trolley Features

View Angle Adjustment



Gel Holder

DVD/Printer Dock



Braking System

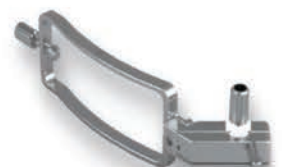
- Carrying Case & Needle Guide Brackets



Convex: BGK-C52



Endocavity: BGK-CR10UA



Linear: BGK-L40UB

Edan U60 Vet

Diagnostic Ultrasound System

Compact Design

- Compact, lightweight design facilitates mobility
- Integrated battery enables operation anywhere
- Large 15" monitor for easy viewing

Comprehensive Clinical Applications

- Full set of transducers to support all applications

Advanced Imaging Technology

- Tissue Harmonic Imaging
- Spatial Compounding Imaging
- Speckle Reduction Imaging

User-friendly Operation

- Backlit, easy-to-use control panel
- Customisable user-defined controls
- Large capacity data storage



Vet Direct Services
Units 9/10 Gateway West
Kingfisher Boulevard
Newburn Riverside
Newcastle upon Tyne
NE11 8NZ

Freephone 0800 068 3300
Fax 0800 068 3311
International +44 (0)191 2642705

Email info@vet-direct.com
Website www.vet-direct.com

Vet Direct
...on the pulse